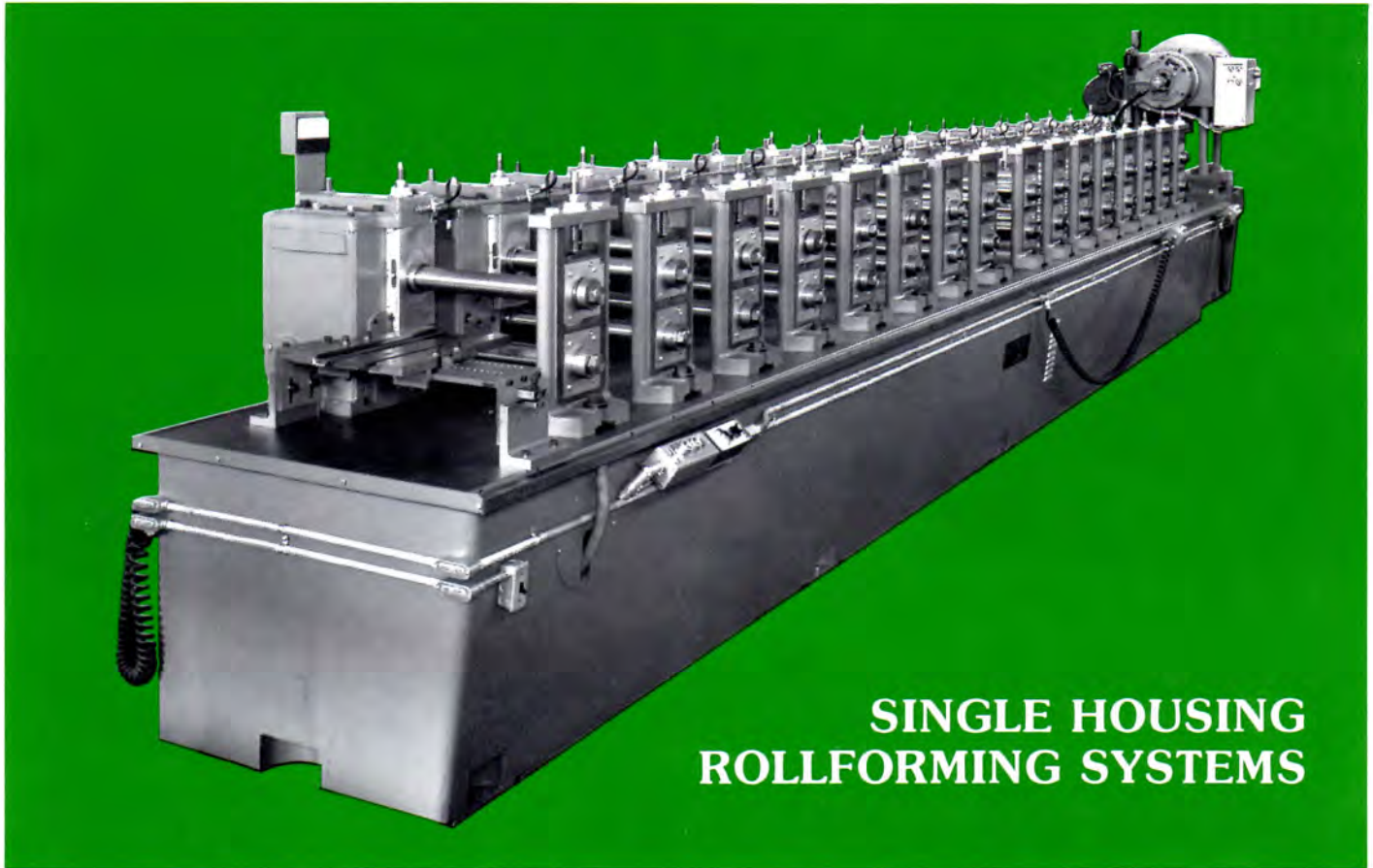


Rafter Machine Company



SINGLE HOUSING ROLLFORMING SYSTEMS

Rafter Single Housing Rollformers are of unit construction, with one pair of spindles per head.

Design features include:

- **Base** - Constructed of heavily-ribbed steel plates, securely welded water tight for use as a sump for roll lubricant. Large hand hole plates are provided for cleaning.

- **Spindles** - All spindles are machined from heat-treated alloy steel and mounted on heavy duty,

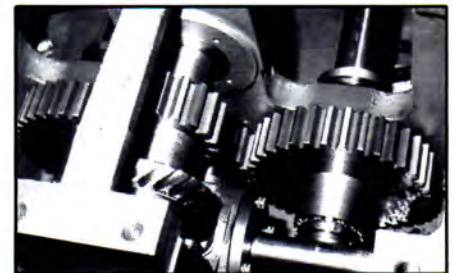


Typical Rafter spindle design

anti-friction bearings with no overhung gears. All gearing is oversized and totally enclosed in an oil bath.

- **Drive** - Patented, balanced gear drive delivers power efficiently to *each pair* of rolls, with a continuous reduction from drive shaft to roll shaft. Maximum adjustment of upper spindles, the largest spindle gears in the industry, and the ability to build in a wide range of gear ratios result in quiet, efficient, reliable machine operation, requiring less power than any other drive available.

- **Quick Roll Change** - When changing rolls, adjustments are made by a single screw, connected with both front and rear bearings. This unique design assures that the shafts *always* remain parallel, and provides the quickest and most accurate roll changeover possible.



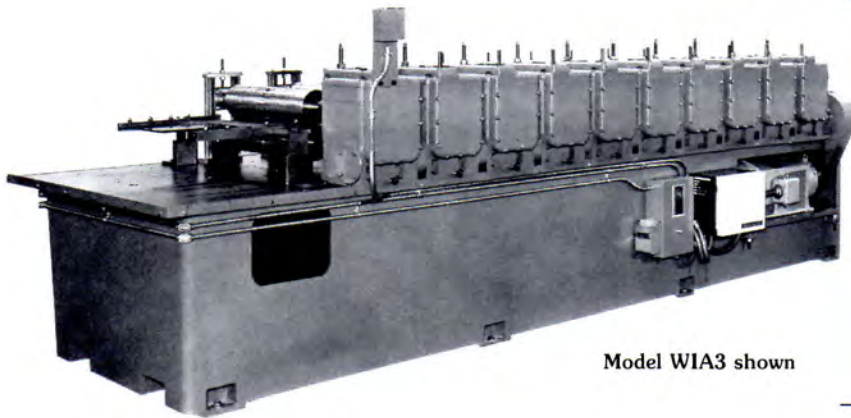
Typical Rafter gearing design

- **Roll Lubrication** - Spray outlets and a built-in pump draw lubricant from the base continuously to lubricate each top and bottom roll, and also the material being formed.

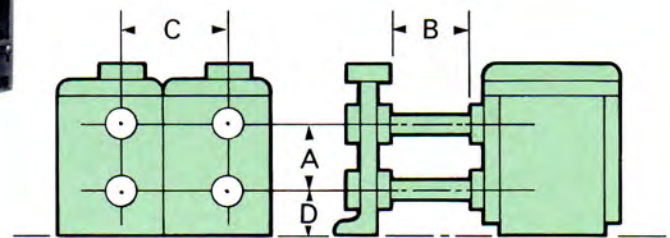
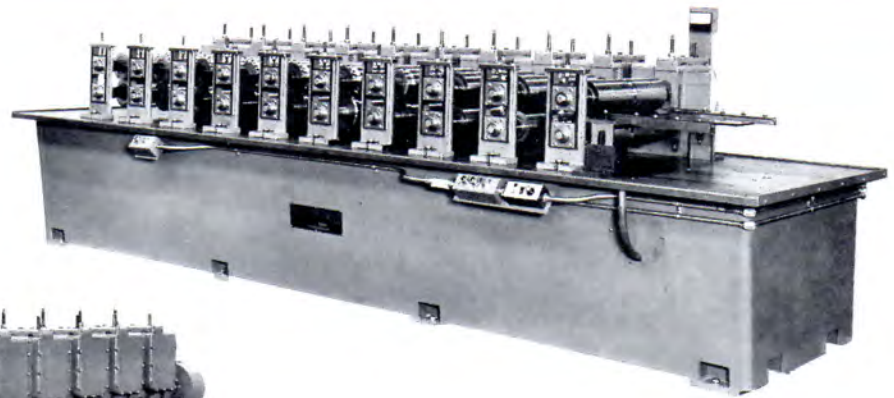
These and other Rafter design features assure the lowest power usage possible, lasting accuracy and reliability, longer roll life, and consistent quality, high production output.

Rafter Single Housing Rollformers...

MACHINE SPECIFICATIONS



Model W1A3 shown



Machine Specifications	Model W1A3	Model WA3	Model WB4
Standard Roll Shaft Diameter, in.	2"	2½"	3"
Optional Roll Shaft Diameter, in.	1½", 1⅞"	3"	4"
Upper Spindle Adjustment (A), in.	4" to 7"	6" to 8½"	7¼" to 11"
Spindle Key Size, in.	⅜" x ¼"	½" x ¼"	½" x ¼"
Roll Space (B), in.	12"	15"	18"
Max. Shape Height with St'd. Gearing	1¾"	2⅞"	2½"
Horizontal Center Distance (C), in.	12"	15"	19"
Unequal Gearing Ratio (Max.)	2.113	2.250	2.468
Worm Gearing Ratio	5 to 1	5½ to 1	10⅔ to 1
Base to Lower Roll Shaft (D), in.	5⅝"	6½"	8"
Horsepower (10 head machine)	25 HP	40 HP	60 HP
Maximum Strip Thickness, in. *	.062"	.156"	.250"

* Capacity determined by number of bends.



Rafter Equipment Corp.

12430 Alameda Drive
Strongsville, OH 44149

Tel: (440) 572-3700

www.RafterEquipment.com